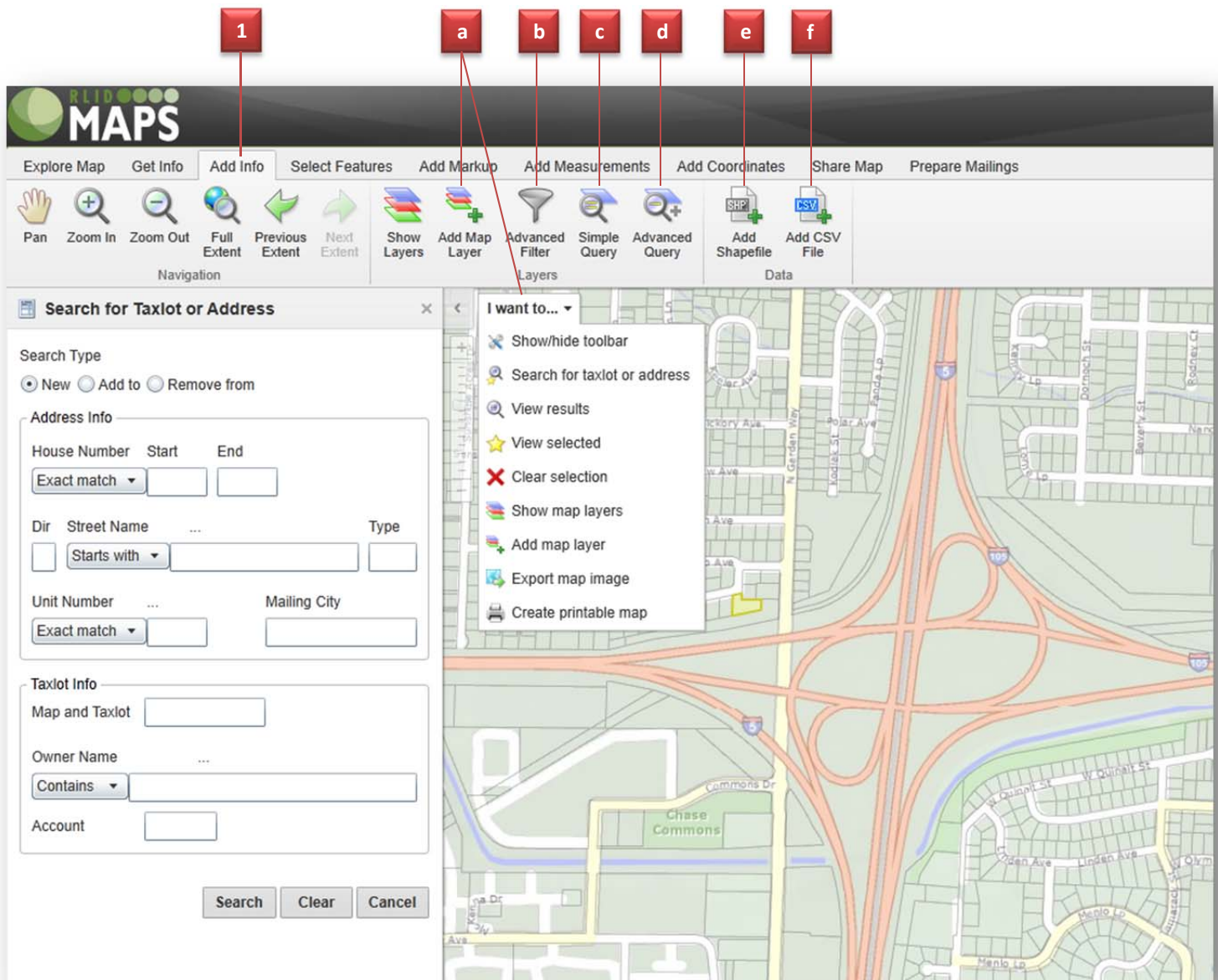


New RLID Maps Features

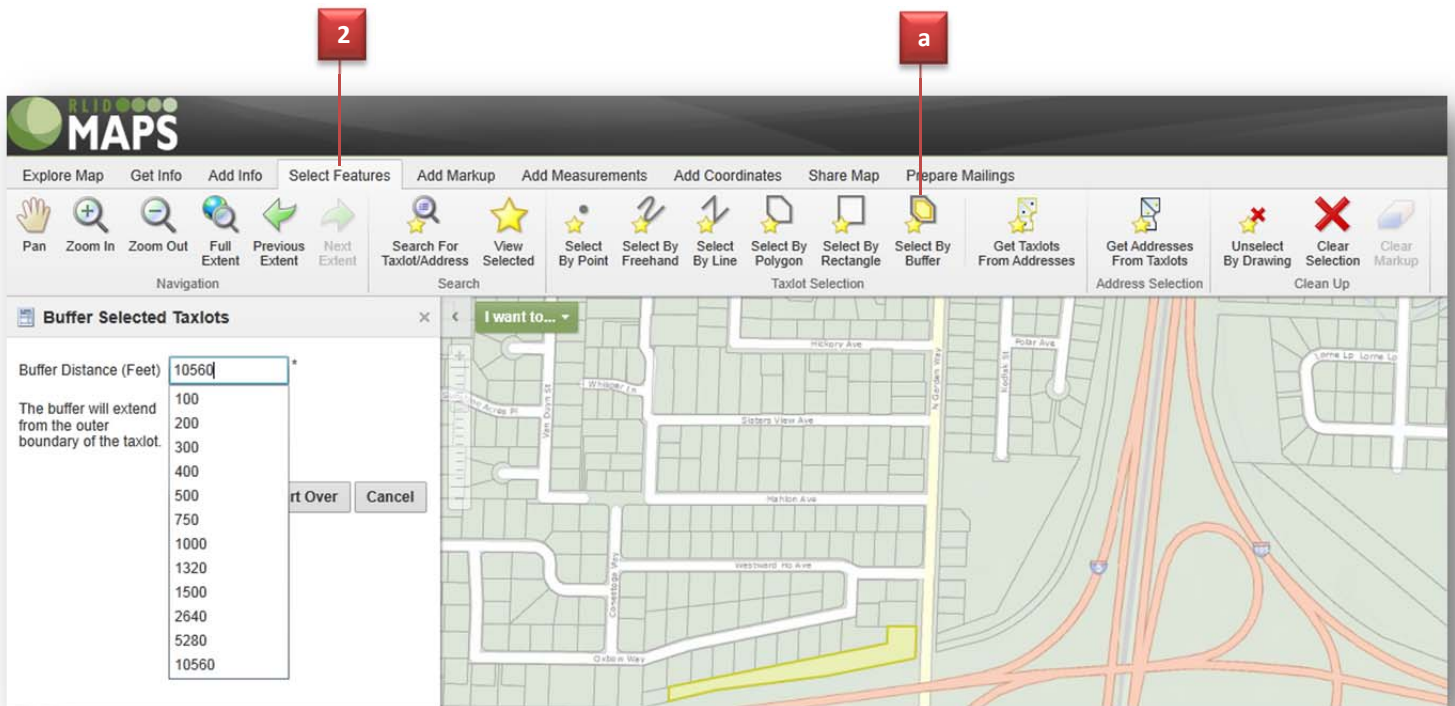


New navigation features in Map Viewer:

1. New **Add Info** tab has tools for allowing user-added feature layers and searching and filtering those layers
 - a. **Add Map Layer** (toolbar and “I want to...” menu)
 - b. **Advanced Filter**
 - c. **Simple Query**
 - d. **Advanced Query**

Also, the **Add Info** tab has tools to allow you to add small shapefiles or CSV point files as graphic layers

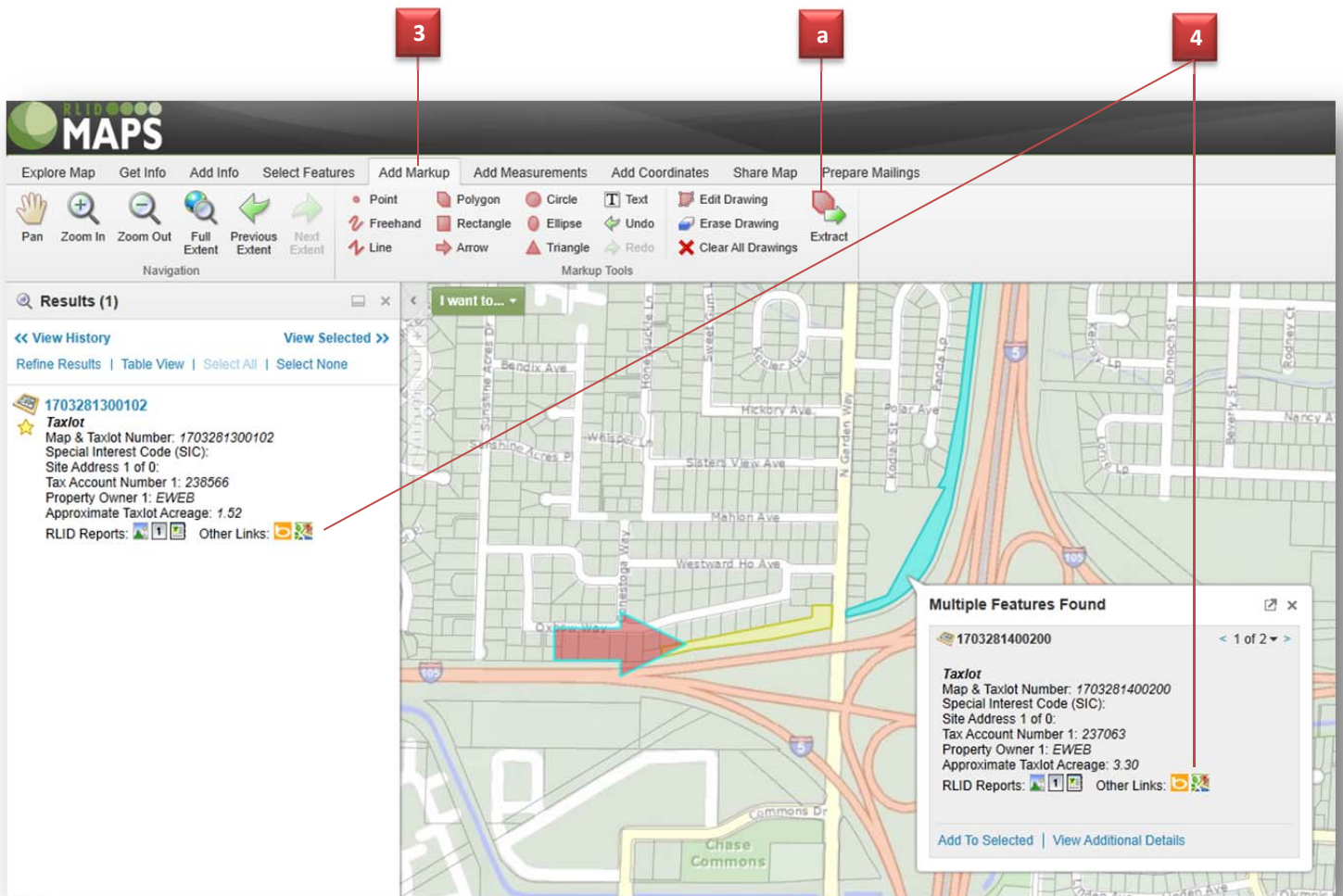
- e. **Add Shapefile**
- f. **Add CSV File**



2. In the **Select Features** tab

- a. The **Select by Buffer** tool now allows searches up to 2 miles (10560 feet) or 20,000 features.

All searches and selections allow results for up to 20,000 features to be returned.



3. Add Markup tab

- a. Includes the new **Extract** tool to allow you to extract markup as an Esri shapefile enclosed within a downloadable zip-file.

4. Links to **Bing Maps** and **Google Maps** in the results and map tips.

Other changes:

- On the **Explore Map** tab, we have removed the **Layer Drawing Order** tool.